

The background of the entire page is a faded, sepia-toned topographical map. It shows a landscape with a river, various hills and valleys, and some small settlements. The map is oriented horizontally. The title 'DARGOW' is printed in large, bold, black serif capital letters across the upper portion of the map. Below it, the subtitle 'TWO PROPOSALS, ONE PLACE' is in a smaller, italicized serif font. A white rectangular box with a thin black border is positioned in the middle of the page, containing the authors' names 'Silvia Reneses & Ebba Rohweder' in a bold, black serif font. At the bottom of the page, the exhibition dates and location are listed in a black serif font.

DARGOW

TWO PROPOSALS, ONE PLACE

Silvia Reneses & Ebba Rohweder

15th December 2011 to 14th January 2012 - Galería José Robles - Madrid

Contents

Crossings by Lucy R. Lippard	3
Words about	4
About the artists	5
Catalogue	7



Lucy R. Lippard

“CROSSINGS - In a sense this exhibition brings us two places, though they both have the same name – Dargow, Germany. Ebba Rohweder sees a familiar place over time, from past to present, the span she has known personally. Spaniard Silvia Reneses sees different place, unfamiliar, newly revealed. Her small paintings are postcard size, indicative of the visitor’s view, while Rohweder’s video and music extend over time, including family and change. The artist’s book becomes a souvenir while the video/music becomes nostalgia, or corrected nostalgia. Dargow was once on the border between two places that were once (and then became again) a single place – Germany as a divided and a unified nation. This quasi-geographical fact augments the dual vision. For both artists, landscape is “baggage.” The viewer is invited to be in two places at once, and to bring their own baggage – the inescapable personal associations that inevitably surface as we stand before someone else’s images”.

The project *Dargow - Two proposals, one place* presented at the José Robles Gallery, Madrid, arises from the collaboration of two European women artists, living in Madrid, Ebba Rohweder, German and Silvia Reneses, Spanish and explores from different subjectivities and through mixed media - video, sound, painting, photography and text - a place and its landscape.

Dargow is a small village in the North of Germany, located on the banks of the great lake Schaalsee, which, in the recent past was the border between the former GDR, East Germany and the BRD, West Germany. After a journey to this territory in 2009 both artists independently produced works on Dargow, arising afterwards the possibility to exhibit the project jointly. Though the starting point of both artists is very different, a connection is dictated by that same place. One can recognise in both works pathway crossings on the gaze that transits on the same territory.

Silvia Reneses's work *Dargow-Land* documents the place through postcard size acrylic landscape paintings on paper. The works's subtitles explore an unknown language indicating that any landscape emanates from the different cultures that have been shaping it and is therefore what the territory has been absorbing under its surface. The visual play between the small paintings, the photos from which the paintings have been produced and the investigation on the German language intend to reproduce the visual, sensitive and knowledge connections that any journey entails.

Dargow was for Ebba Rohweder the place of residence in her childhood and youth and her video *Dargow with detour* is a collage of different layers of time. Due to her studies in music and composition the artist continues in this work with her explorations on merging two disciplines; video and composition. The delicate and sometimes disturbing look at childhood memories and place as well as the exploratory yet emotive present gaze makes of this work a self-portrait through a landscape.

Ebba Rohweder born in Hamburg, Germany, in 1966, is a multimedia and interdisciplinary German artist working as a video artist, composer, performer and improviser musician. She studied classical flute at the Folkwang Universität der Künste Essen, Germany. In 1991 she moved to Berlin and worked as a freelance musician of contemporary music and performance artist, getting in 2001 a Grant as a composer from the Berliner Senat. In 2004 she moved to Madrid and has since explored the interconnections between images and sound in her video compositions, which have been presented amongst others at: LOOP art fair, Barcelona; MediaLab Prado, Madrid; OffLimits, Madrid; CCCB, Barcelona; Fundación Joan Miró, Barcelona; Instituto Cervantes, Paris; Festival re:new, Copenhagen; Technische Universität, Berlin; Museo Nacional Centro de Arte Reina Sofía, Madrid; Gallery Cruce, Madrid.
www.ebbarohweder.com

Silvia Reneses born in Madrid, Spain, in 1965, is an artist living and working in Madrid. She graduated in 1999 from Central Saint Martins College of Art and Design (BA Hons - Critical Fine Art Practice) London. She has taken part among others in the following exhibitions; *Much depends on the viewer*, Vienna, curated by Silvio Salgado within the Vienna International Apartment Project, *Friction* at the London Print Studio Gallery, space curated by Paul O'Neill, *Escalas* at the José Robles Gallery in Madrid and *Recorremos* Gallery Cruce - Art and Contemporary Theory in Madrid in 2008.
www.silviareneses.com



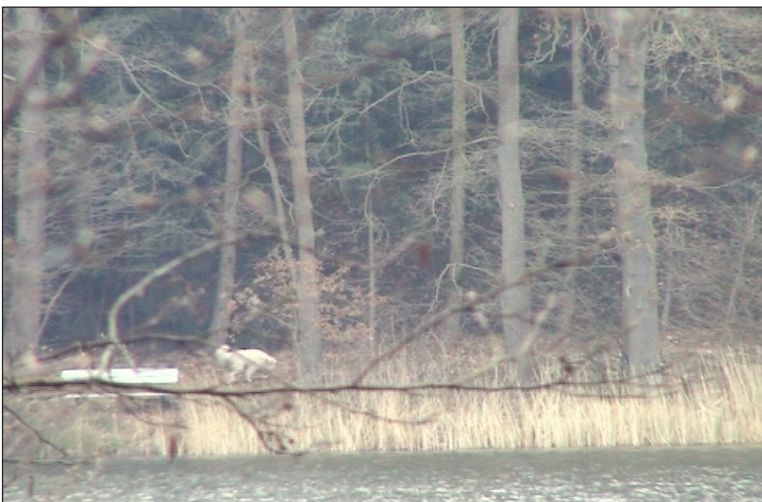
Exhibition View

Video Space



Video Space





Dargow with detour - Ebba Rohweder - 2011 - *Video stills - Video/composition, DVD, spanish/english/german - 37:03 min*





Dargow with detour - Ebba Rohweder - 2011 - *Video stills - Video/composition, DVD, spanish/english/german* - 37:03 min





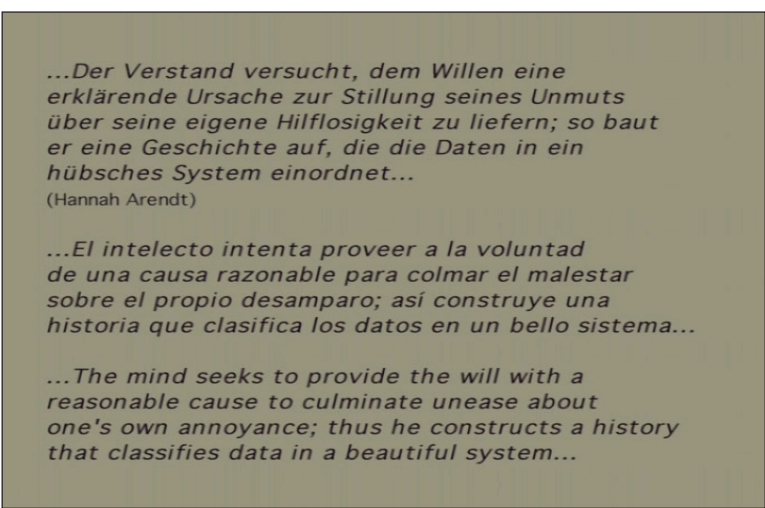
Dargow with detour - Ebba Rohweder - 2011 - *Video stills - Video/composition, DVD, spanish/english/german* - 37:03 min





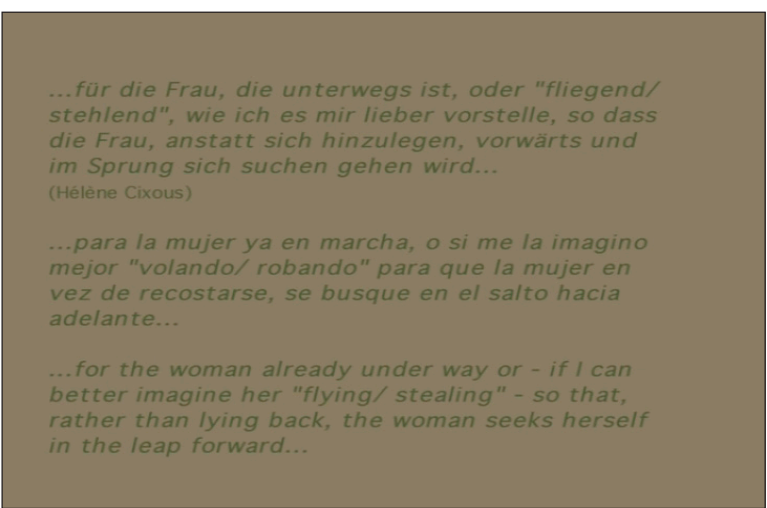
Dargow with detour - Ebba Rohweder - 2011 - *Video stills - Video/composition, DVD, spanish/english/german - 37:03 min*



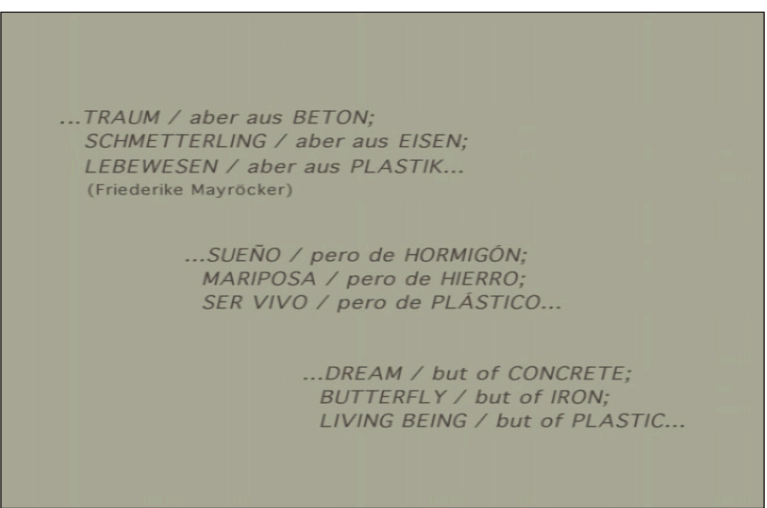


Dargow with detour - Ebba Rohweder - 2011 - Video stills - Video/composition, DVD, spanish/english/german - 37:03 min

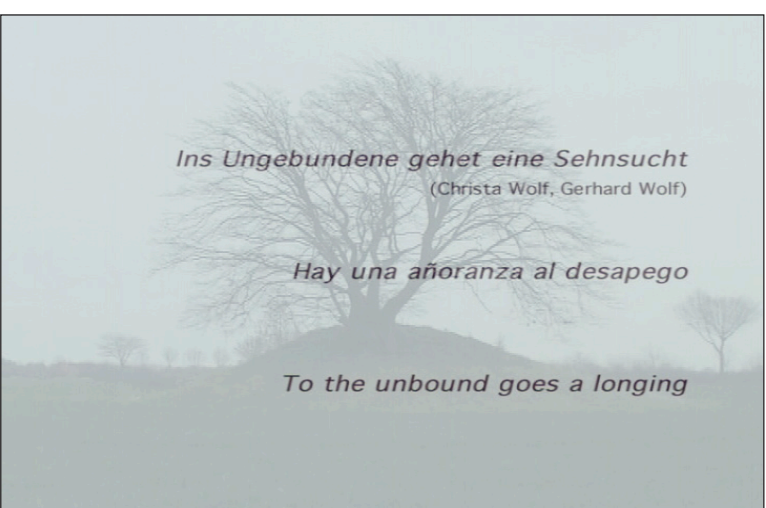
Quotes from: Hannah Arendt



Hélène Cixous



Friederike Mayröcker



Christa Wolf.



DargowLand - Silvia Reneses - 2011 . *Exhibition view The image: 1 & paintings's details below.*





Länderkunde I *f* geografia *f*.

Länderkunde I geography.
2011- *Acrylic on paper and text* - 34 × 25,5 cm.



Länderkunde II *f* geografia *f*.

Länderkunde II geography.
2011- *Acrylic on paper and text* - 34 × 25,5 cm.



Landessache *f* asunto *m* del Estado.

Landessache state affair.

2011- *Acrylic on paper and text* - 34 x 25,5 cm.



Landstreicherei *f* vagabundeo *m*.

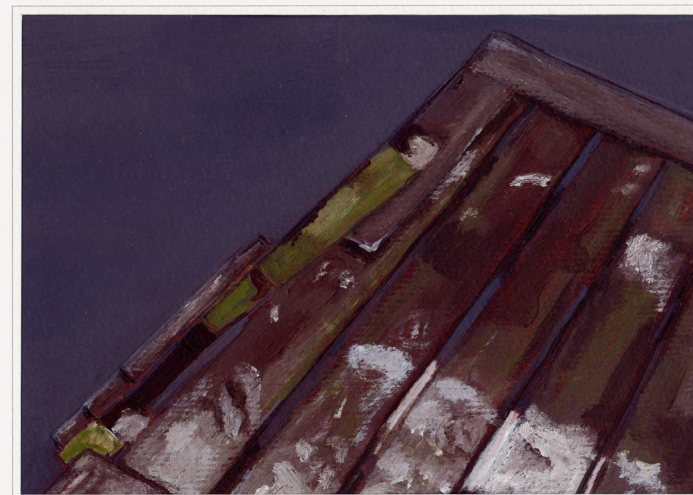
Landstreicherei vagrancy.

2011- *Acrylic on paper and text* - 34 x 25,5 cm.



landen *v* tomar tierra; arribar; abordar; aterrizar; tomar puerto; llegar; ir a parar, recalar.

landen to land; to alight; to debark; to come ashore; to touch down; to end up.
 2011- *Acrylic on paper and text - 34 x 25,5 cm.*



Landvermessung *f* agrimensura *f*; geodesia *f*.

Landvermessung land surveying.
 2011- *Acrylic on paper and text - 34 x 25,5 cm.*



Landfriedensbruch // ruptura *f* de la paz pública.

Landfriedensbruch breach of the peace.
2011- *Acrylic on paper and text - 34 x 25,5 cm.*



landesüblich *adj.* habitual, según las costumbres del país.

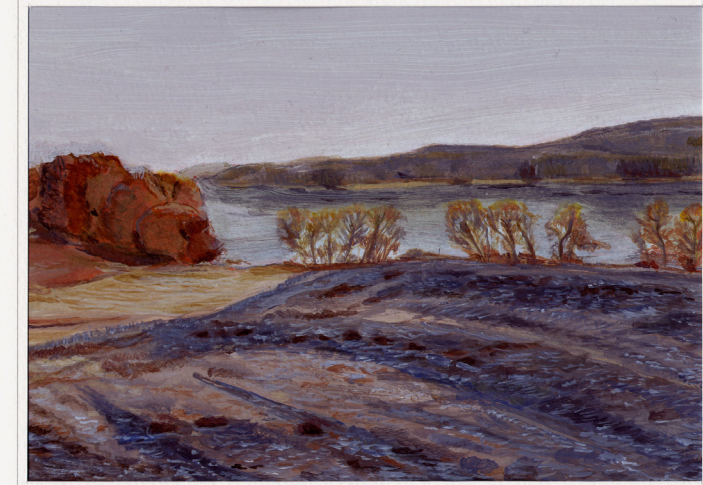
landesüblich customary.
2011- *Acrylic on paper and text - 34 x 25,5 cm.*



Landregen *m* lluvia *f* persistente, calabobos *m*.

Landregen steady rain.
2011- *Acrylic on paper and text* - 34 x 25,5 cm.

The image: 1
I remembered that I had painted a frozen lake, it was summer, august in Madrid.



Landstrich *m* comarca *f*, región *f*.

Landstrich area; district; region.
2011- *Acrylic on paper and text* - 34 x 25,5 cm.



Landesinnere // interior // del país.

Landesinnere heartland; hinterlands; interior; interior of the country.
2011- Acrylic on paper and text - 34 x 25,5 cm.



Landwind // viento // de tierra.

Landwind land breeze; land wind; offshore wind.
2011- Acrylic on paper and text - 34 x 25,5 cm.



Landschaft *f* paisaje *m*; distrito *m*, comarca, región *f*; provincia *f*; campiña *f*; panorama *m*, vista *f*.

Landschaft countryside; scenery; landscape; region; territory.
2011- *Acrylic on paper and text* - 34 x 25,5 cm.



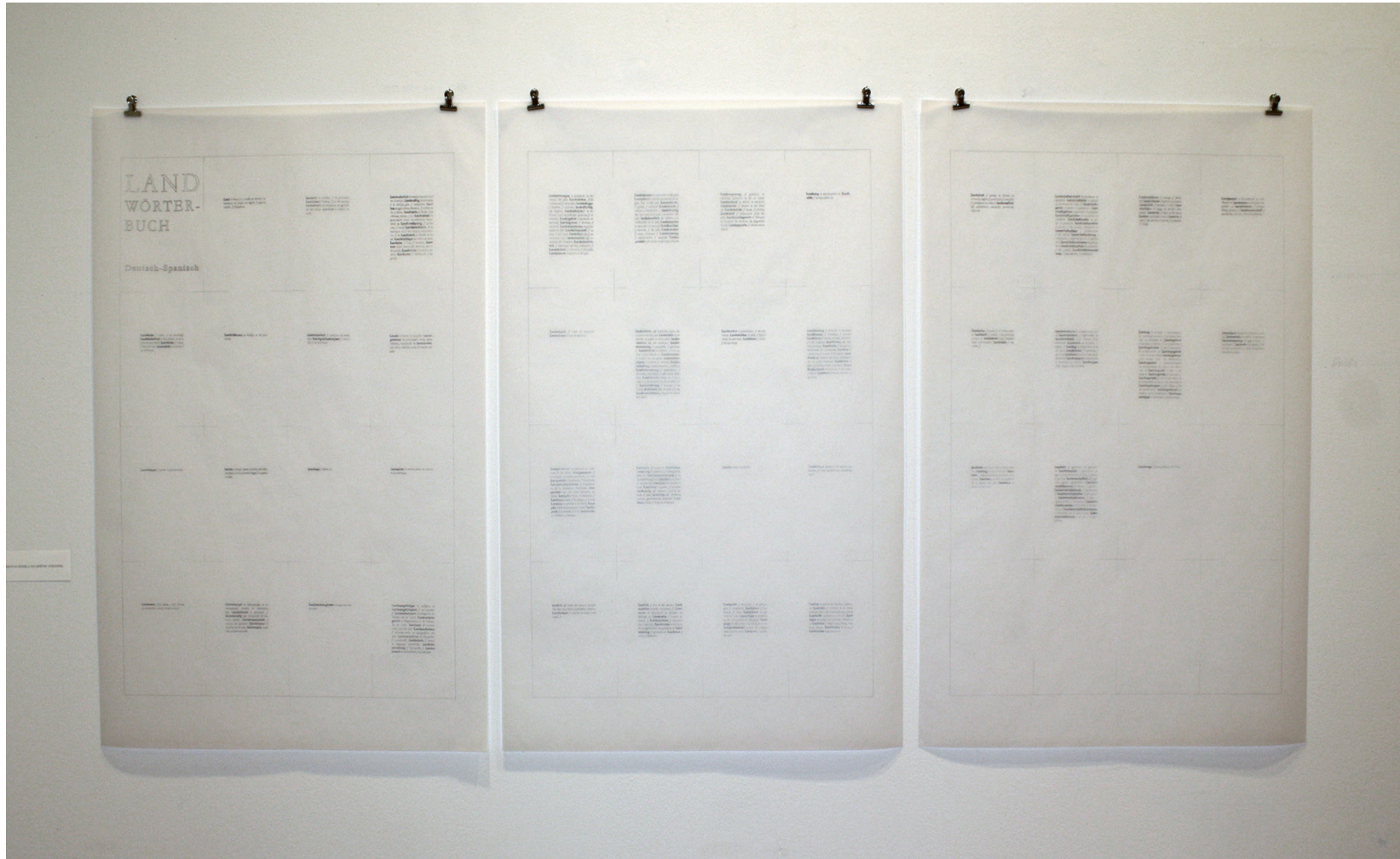
landschaftlich *adj.* paisajístico; comarcal, provincial, regional.

landschaftlich scenic; scenically.
2011- *Acrylic on paper and text* - 34 x 25,5 cm.

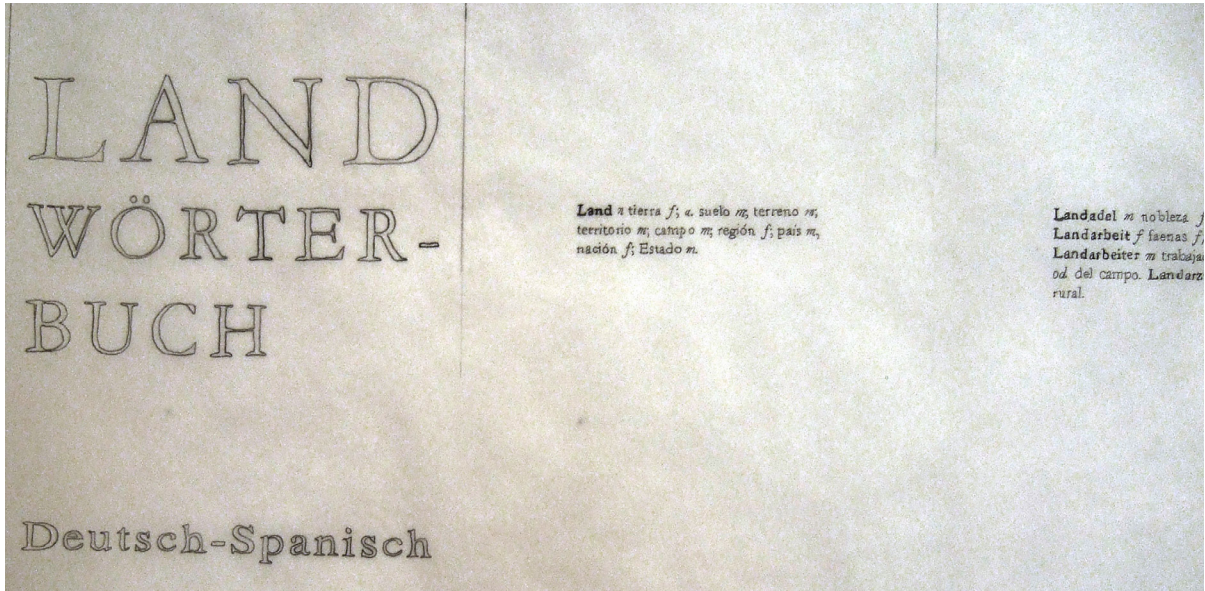
The image: 2
The work titles arised as a german-spanish dictionary of the single german word, Land, and its com-
posed words, as sub-titles, creating thus another landscape. A linguistic landscape.



DargowLand - Silvia Reneses - 2011 . *Exhibition view The image: 2 & The image: 3.*

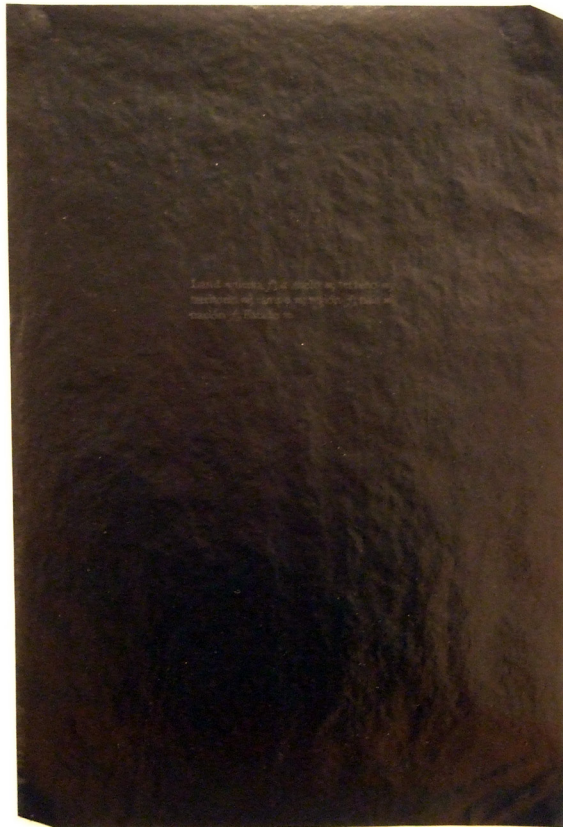


Land Wörterbuch Deutsch- Spanisch Land Dictionary German - Spanish.
2011- *Graphite pencil on tracing paper - 70 cm × 100 cm each.*



Land Wörterbuch - 2011- *details.*



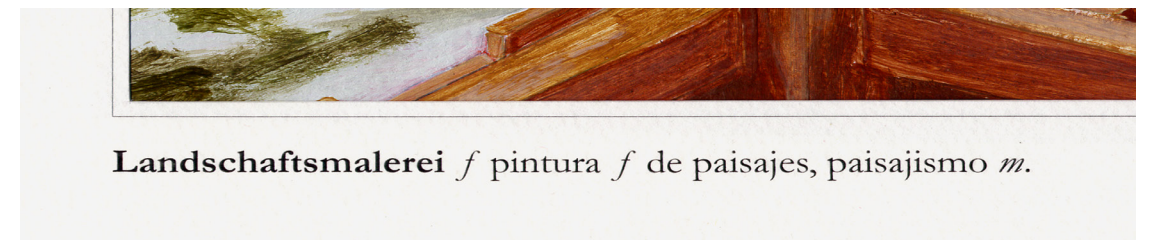
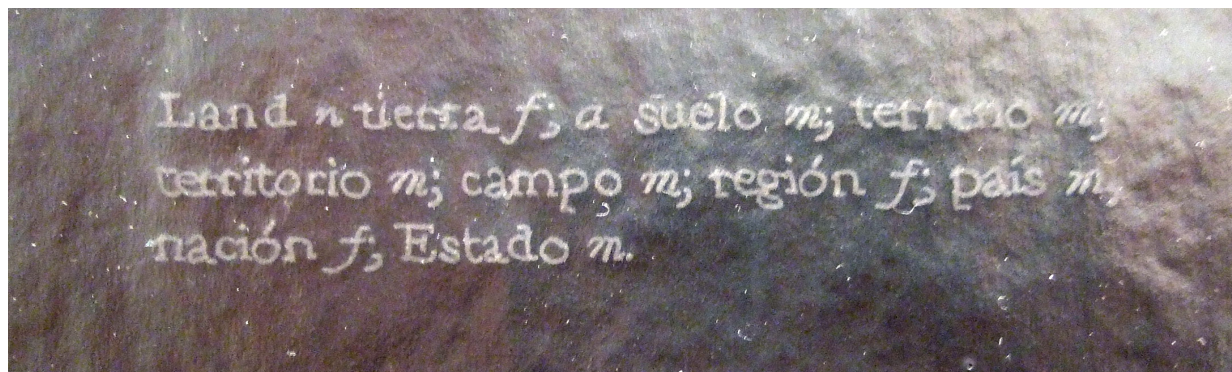


Land Wörterbuch - 2011- *Carbon paper* - 31,5 x 21 cm.



Landschaftsmalerei *f* pintura *f* de paisajes, paisajismo *m*.

Landschaftsmalerei landscape art; landscape painting.
2011- *Acrylic on paper and text* - 34 x 25,5 cm.



Landschaftsmalerei *f* pintura *f* de paisajes, paisajismo *m*.

Landschaftsmalerei - 2011- *detail*.

The image: 3

The paintings based on colour photography brought this third image: to process the colour photographs turning them (again) into black and white images in order to create a souvenir artist book. This is the image. However the inclusion of private photographs taken *in situ* without any artistic intention, compromised the quality of the piece as a whole. The process of the work made necessary nevertheless the exhibiting of these photographs independently of their quality.

They are included, on this occasion, as working documents, and with a promise for the future: to return to Dargow, in some other winter under extremely low temperatures, with its landscapes covered by snow, its lakes frozen and with the light sieved by cold, to photograph thus, in this return, one by one, in black and white and with meticulous fidelity the places here represented. Perhaps then the amnesia implicit in these photographs will be cleared and the spiral through which this exhibition goes about could be imaginarily closed.



DargowLand - Silvia Reneses - 2011 . *Exhibition view The image: 3.*



DargowLand - Silvia Reneses - 2011 . *Exhibition view The image: 3.*

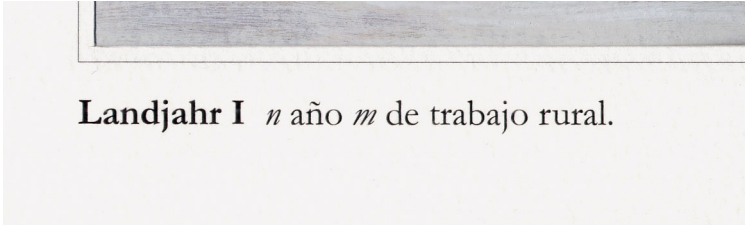


DargowLand - Silvia Reneses - 2011 . *Exhibition view The final image.*

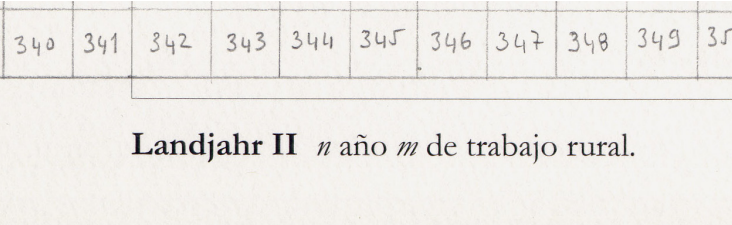




Landjahr I & II rural area working year.
2011- *Acrylic on paper and text - 34 x 25,5 cm.*



Landjahr I *n* año *m* de trabajo rural.



Landjahr II *n* año *m* de trabajo rural.



Landesgrenze I *f* frontera *f* nacional.

Landesgrenze I border; frontier.
2011- *Acrylic on paper and text - 34 x 25,5 cm.*



Landesgrenze II *f* frontera *f* nacional.

Landesgrenze II border; frontier.
2011- *Acrylic on masking paper and text - 34 x 25,5 cm.*

Special thanks are due to Lucy R. Lippard for kindly writing the introduction text.

Contacts:

Tel. 00 34 91 530 22 82

ebba.madrid@yahoo.es

sreneses@yahoo.co.uk

www.ebbarohweder.com

www.silviareneses.com

All works of Ebba Rohweder are Copyright © Ebba Rohweder. All rights reserved.
All works of Silvia Reneses are Copyright © Silvia Reneses. All rights reserved.

Edited by Silvia Reneses. 2012.

